

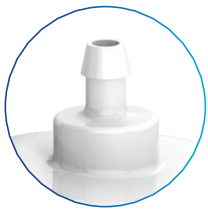
Disc Filters Inlet/Outlet Fittings



Reliable Connections, Seamless Integration

Prioritize the reliability of connections, and the ease of filter installation, with the unparalleled selection of inlet/outlet fittings offered by Saint-Gobain.

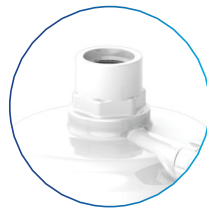
Fittings for our disc filters can be grouped into categories of:



Hose Barbs



Luer



Threaded



Quick Connects



Push-to-Connect



Tri-Clamps

We can also accommodate customer-specific fittings.

Consult with the experts at Saint-Gobain to determine the appropriate configuration and fittings for your application.

ADVANTAGES OF CUSTOMIZATION

- Create a poka-yoke to prevent incorrect installation
- Valved fittings can mitigate the loss of a valuable solution during filter change outs
- Quick connect fittings can improve ease of use and/or ease of filter change outs
- Eliminate the need for complex and costly adapters
- Customer-specific fittings can serve to protect OEMs from aftermarket competitors



Fitting Options for Disc Filters

The table below provides an overview of the inlet/outlet fitting options available for our disc filters. However, not all fitting options are displayed here. **Consult with the experts** at Saint-Gobain to determine the appropriate configuration and fittings for your application.

Fitting Description		D4	D13	D25	D40	D50	G50	D65	D90	RD65
Hose barb fittings										
OH	1/16" Hose barb		•	^	^					
AH	3/32" Hose barb		•	•	•					
1H	1/8" Hose barb		•	•	^	^		^	^	^
2H	1/4" Hose barb			^	^	^	^	^	^	^
3H	3/8" Hose barb			^	^		^	^	^	^
4H	1/2" Hose barb							•	•	^
5H	9/16" Hose barb								^	
Luer fittings										
LF	Female luer lock	•	•	•	•	•	•	•	•	•
LM	Male luer lock	•	•	•	•	•		•	•	•
LS	Luer lock male slip	•	•	•	•	•				
Threaded fittings										
1N	1/8" MNPT			•	•	•	•			
1NF	1/8" FNPT					•	•	•	•	•
2N	1/4" MNPT					•	•	•	•	
2NF	1/4" FNPT					•	•	•		•
2UF	1/4" - 28 Thread female			•	•					
3N	3/8" MNPT							•		
3NF	3/8" FNPT							•		•
Quick connect fittings										
1Q	1/8" male quick connect for metal latch		•	•	•	•	•	•	•	•
1QV	1/8" male valved quick connect for metal latch					•		•	•	
1QF	1/8" female quick connect with metal latch					•	•	•	•	
1QVF	1/8" female valved quick connect with latch					•		•	•	
2Q	1/4" male quick connect for metal latch					•	•	•	•	•
2QV	1/4" male valved quick connect for metal latch							•	•	
2QF	1/4" female quick connect with metal latch							•	•	
2QFV	1/4" female valved quick connect with metal latch							•	•	
Push-to-connect fittings										
2P	1/4" Push to connect					•		•	•	
2PE	1/4" Push to connect elbow					•		•	•	
1C	1/8" Compression			•	•					
Tri-clamp fittings										
MT	1/2" Tri-clamp						•	•	•	
TC	1 1/2" Tri-clamp							•	•	

Note: Not all fittings are available for all filter sizes. Not all fittings are available at the inlet and/or outlet (for example, D4 filters are only available with inlet/outlet fittings of LFLM and LMLS). Consult with the experts at Saint-Gobain Medical to learn more.

- Fitting is available (if it is a hose barb, it is a single hose barb)
- ^ Fitting is available (if it is a hose barb, it is a stepped hose barb)

Limited Warranty: For a period of 6 months from the date of first sale, Saint-Gobain Performance Plastics Corporation warrants this product(s) to be free from defects in manufacturing. Our only obligation will be to provide replacement product for any portion proving defective, or at our option, to refund the purchase price thereof. User assumes all other risks, if any, including the risk of injury, loss or damage, whether direct or consequential, arising out of the use, misuse, or inability to use this product(s). SAINT-GOBAIN DISCLAIMS ANY AND ALL OTHER WARRANTIES, EXPRESSED OR IMPLIED, INCLUDING THE IMPLIED WARRANTIES OF MERCHANTABILITY AND FITNESS FOR A PARTICULAR PURPOSE.

NOTE: Saint-Gobain Performance Plastics Corporation does not assume any responsibility or liability for any advice furnished by it, or for the performance or results of any installation or use of the product(s) or of any final product into which the product(s) may be incorporated by the purchaser and/or user. The purchaser and/or user should perform its own tests to determine the suitability and fitness of the product(s) for the particular purpose desired in any given situation.

ICS-6685-0818-SGLS // © 2025 SAINT-GOBAIN PERFORMANCE PLASTICS

