

VERSILON[®]
Engineered Versatility

Fluoropolymer Hose and Fitting Selection Guide



SAINT-GOBAIN
INDUSTRIAL &
CONSUMER
SOLUTIONS



Making a material impact
around the world.


SAINT-GOBAIN

Versilon® Fluoropolymer Hose and Fittings

Table of Contents

Versilon® Fluoropolymer Hose Styles

Rubber Covered Smooth ID Transfer Hose	p. 1
Stainless Steel Smooth ID Braided Hose	p. 2
Convuluted ID Transfer Hose - Open Pitch	p. 2
Convuluted ID Transfer Hose - Low Profile	p. 3

Versilon® Fitting End Connections

Sanitary	p. 4
Flanged Connections	p. 4
Male Cam & Groove	p. 5
Female Cam-Lock (Cam & Groove)	p. 5
Compression, O-ring and Vacuum	p. 5
NPT	p. 6
Unions, Female JIC	p. 6

Versilon® Adapters

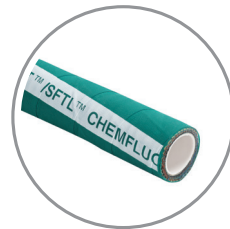
	p. 6
--	------

Versilon® Fluoropolymer Hose Styles

Rubber Covered Smooth ID Transfer Hose

TLCT

Smooth I.D. FEP fluoropolymer lined EPDM rubber hose (green)

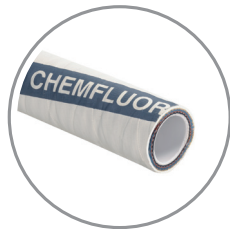


Size range : 1/2" to 4" I.D.
Temperature rated : -40°F to +350°F

End connections : Permanent crimp style; Flare-Thru
 Consult factory for available sizes/styles

WTLCT

Smooth I.D. FEP fluoropolymer lined EPDM rubber hose (white)

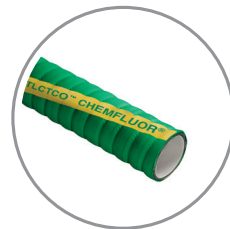


Size range : 1/2" to 4" I.D.
Temperature rated : -40°F to +350°F

End connections : Permanent crimp style; Flare-Thru
 Consult factory for available sizes/styles

TLCTCO

Smooth I.D. FEP lined EPDM rubber hose with "Convuluted Outer" for improved flexibility



Size range : 3/4" to 2" I.D.
Temperature rated : -40°F to +350°F

End connections : Permanent crimp style; Flare-Thru
 Consult factory for available sizes/styles

WTLCTPFA

Smooth ID, ultra pure unpigmented PFA lined white EPDM rubber covered transfer hose



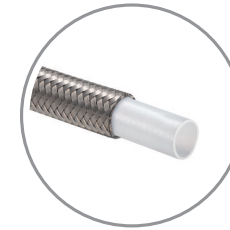
Size range : 3/4" to 2" I.D.
Temperature rated : -40°F to +350°F

End connections : Permanent crimp style; Flare-Thru
 Consult factory for available sizes/styles

Stainless Steel Smooth ID Braided Hose

TS

True bore smooth I.D. PTFE tube, 304 stainless steel braid reinforced hose



Size range : 1/8" to 1" I.D.
Temperature rated : -100°F to +450°F continuous; +500°F intermittent
End connections : Permanent crimp style

TD

1-1/2" version of TS with two 304 stainless steel reinforcing braids

Temperature rated : -100°F to +450°F continuous; +500°F intermittent
End connections : Permanent crimp style

TSS

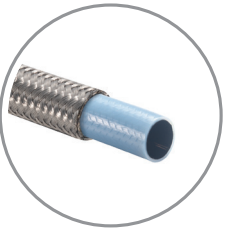
Platinum cured, extruded silicone covered 304 stainless steel reinforced PTFE smooth tube hose



Size range : 1/4" to 1" I.D.
Temperature rated : -100°F to +450°F continuous; +500°F intermittent
End connections : Permanent crimp style

TB

Anti-static (black) true bore smooth I.D. PTFE tube 304 stainless steel braid reinforced hose



Size range : 1/4" to 1" I.D.
Temperature rated : 100°F to +450°F continuous; +500°F intermittent
End connections : Permanent crimp style

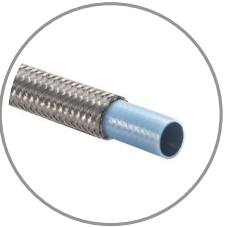
TDB

1/2" version of TB; two 304 stainless steel reinforcing braids

Temperature rated : -100°F to +450°F continuous; +500°F intermittent
End connections : Permanent crimp style

TH

Anti-static (black) PTFE tube, 304 high density stainless steel braid reinforcement

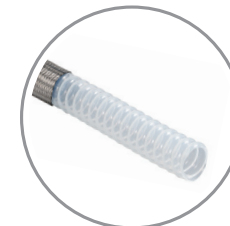


Pressure rated for 5000 psi all sizes
Size range : 1/4" to 1" I.D.
Temperature rated : -65°F to +400°F continuous;
End connections : Permanent crimp style

Convuluted ID Transfer Hoses - Open Pitch

TWOB

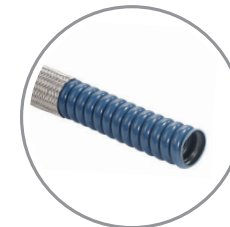
Open pitch (white) PTFE helical convuluted I.D. hose; 316 stainless steel braid reinforcement



Size range : 1/2" to 4" I.D.
Temperature rated : -100°F to +450°F
End connections : Flare-Thru; flanged, female cam-lock and sanitary; Permanent crimp style

TBOB

Anti-static (black) version of open pitch PTFE helical convuluted I.D. hose
 Shares sizes, temperature rating and end connections of TWOB



TWOBHV

Vacuum rated 316 stainless steel braid reinforced version of TWOB
 Includes optional stainless steel support wire for improved vacuum and kink resistance



Size range : 2" to 4" I.D.
Temperature rated : -100°F to +450°F
End connections : Flare-Thru; flanged, female cam-lock and sanitary; crimp style

TBOBHV

Anti-static (black) version of TWOBHV; shares sizes, temperature rating and end connections (not shown)

TBOY

Anti-static (black) version of TWOY

Size range : 1/2" to 4" I.D.

Temperature rated : -40°F to +250°F

End connections : Flare-Thru; flanged, female cam-lock and sanitary; Permanent crimp style



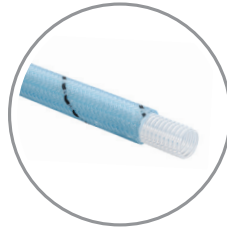
TWOY

Open pitch (white) PTFE helical convoluted I.D. hose; U.V. stabilized large diameter (denier) polypropylene braid reinforcement

Size range : 1/2" to 4" I.D.

Temperature rated : -40°F to +250°F

End connections : Flare-Thru; flanged, female cam-lock and sanitary; Permanent crimp style



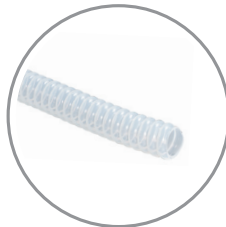
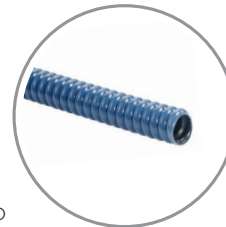
TWOP/TBOP

Unbraided (white, TWOP) and anti-static (black, TBOP) PTFE helical convoluted I.D. hose

Size range : 1/4" to 4" I.D.

Temperature rated : -100°F to +450°F

End connections : Permanent crimp style; Flare-Thru; flanged, female cam-lock and sanitary; Also available with "cuffed" ends to slip over pipe or tube O.D. connections



Convoluted Transfer Hose - Low Profile

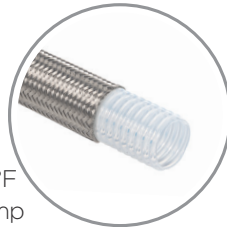
WCS

White PTFE fluoropolymer low profile helical convoluted I.D. hose; 304 high tensile strength stainless steel braid reinforcement

Size range : 3/8" to 2" I.D.

Temperature rated : -65°F to +400°F

End connections : Permanent crimp style



WCSS:

Platinum cured, extruded silicone covered stainless steel reinforced (white) PTFE fluoropolymer low profile convoluted I.D. hose

Size range : 3/8" to 2" I.D.

Temperature rated : -65°F to +400°F

End connections : Permanent crimp style



BCS

Anti-static (black) PTFE low profile version of WCS, shares size range and end connections

Size range : 3/8" to 2" I.D.

Temperature rated : -65°F to +400°F

End connections : Permanent crimp style



TBOK

Anti-static (black) open pitch PTFE helical convoluted I.D. hose

Size range : 3/4" to 3" I.D.

Temperature rated : -40°F to +275°F

End connections : Flare-Thru; flanged, female cam-lock and sanitary; Permanent crimp style



TWOK

Open pitch PTFE helical convoluted I.D. hose; PVDF (Kynar) braid reinforcement

Size range : 3/4" to 3" I.D.

Temperature rated : -40°F to +275°F

End connections : Flare-Thru; flanged, female cam-lock and sanitary; Permanent crimp style



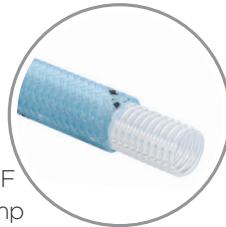
WCP

White PTFE fluoropolymer low profile helical convoluted I.D. hose; U.V. stabilized polypropylene braid reinforcement

Size range : 1/2" to 1" I.D.

Temperature rated : -40°F to +250°F

End connections : Permanent crimp style



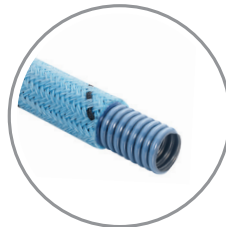
BCP:

Anti-static (black) PTFE low profile version of WCP, shares size range and end connections

Size range : 1/2" to 1" I.D.

Temperature rated : -40°F to +250°F

End connections : Permanent crimp style



Chlorine Hose

PTFE convoluted inner tube with PVDF braid manufactured in accordance with Chlorine Institute Pamphlet 6 specifications

Size range : 1/2" to 1-1/2" I.D.

Temperature rated : -40°F to +120°F

End connections : Permanent crimp style (high nickel & PVDF)



Versilon® Fitting End Connections

Sanitary

Sanitary clamp style, 316L stainless steel
Style 10



Sanitary "jump" styles clamp style, 316L stainless steel

Style 10U - 1 step up

Style 10UU - 2 steps up



Sanitary clamp style 90° elbow, 316L stainless steel

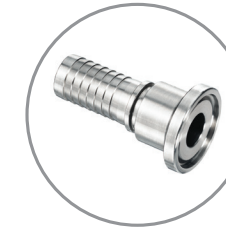
Style 10L

Sanitary & hose barb same size



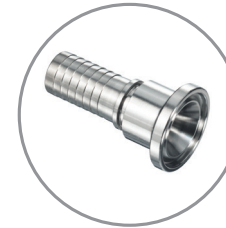
Sanitary "mini", 316L stainless steel

Style 11



Sanitary "mini" jump size, 316L stainless steel

Style 11U



Sanitary 90° elbow "mini", 316L stainless steel

Style 11L

Mini sanitary & hose barb same size

Note: 45° elbows also available full size (style 10L45) & "mini" size (style 11L45)



Bevel seat/nut, 316L stainless steel insert 304 stainless steel nut

Style 20



Sanitary "maxi" size for Sani-Tech® Rigid connections, 316L stainless steel

Style 25



Bevel seat, male threads, 316L stainless steel

Style 40



Butt Weld, sanitary tube size 316L stainless steel

Style 41



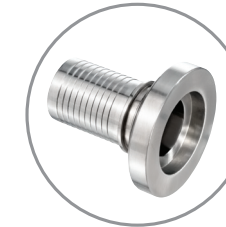
Male I-line, 316L stainless steel

Style 50



Female I-line, 316L stainless steel

Style 51



Fittings made from other materials such as high nickel alloys and PVDF are available. Contact us for more information.

Flanged Connections Class 150 Lap Joint Flanges Shown • Class 300 Lap Joint Flanges Available

316L Flange retainer with: 304 or 316L lap joint flanges

Style 12S6 - 316L flange

Style 12S4 - 304 flange

Style 12C - epoxy carbon steel flange



PFA Encapsulated flange retainer: 304 or 316L stainless steel lap joint flange

Style 12T6 - 316L flange

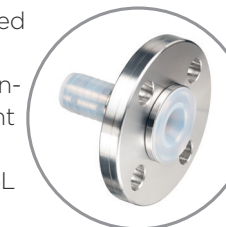
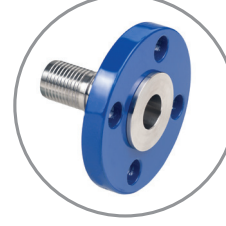
Style 12T4 - 304 flange

PFA encapsulated flange retainer:

Style 12TC - epoxy coated carbon steel

Epoxy coated carbon steel lap joint flange

Style 12TC - epoxy carbon steel flange



"Flare-Thru" flange retainer: fluoropolymer lined

Style 12FTC - epoxy coated carbon steel

Style 12FT6 - 316L flange

Style 12FT4 - 304 flange

C/F for hose type with Flare-Thru flange option

Note: Class 300# flanged assemblies must be cross checked for hose/fitting pressure rating



Male Cam & Groove

316L stainless steel male cam & groove

Style 17 - Male & hose barb same size

Style 17U - Male is one size larger than Hose Barb



Chemflour® PFA Encapsulated male cam & groove

Style 17T - Male & hose barb same size



Fluoropolymer encapsulated male cam & groove fittings available on selected hose styles & sizes

Consult factory for availability

Female Cam-Lock (Cam & Groove)

Female cam-lock, swivel style non-locking arms 316L insert

316 stainless steel body

Style 16



Female cam-lock, swivel style non-locking arms PFA encapsulated insert with 316 stainless steel body

Style 16T



Female cam-lock swivel style locking arms 316L insert 316 stainless steel body

Style 16LK



Female cam-lock, swivel style locking arms PFA encapsulated insert 316 stainless steel body

Style 16TLK



Female cam-lock, swivel style locking and nonlocking arms "Flare-Thru" option

Style 16FTLK - locking arms

Style 16FTS6 - non-locking arms



Fluoropolymer Flare-Thru female cam & groove fittings available on selected hose styles & sizes

Consult factory for availability

Compression, O-Ring and Vacuum

Compression connector 316L stainless steel

Style 31

1/4" to 1" Sizes hose barb & connector same size Step-up & step-down sizes available; consult factory

O-ring style 316L stainless steel

1/4"-1/2" sizes

Style 33



Compression connector w/nut & ferrules 316L stainless steel 1/4" to 1" sizes

Style 31FN

Hose barb & connector same size Step-up & step-down sizes available; consult factory

Vacuum fitting, female 316L stainless steel

1/4" & 1/2" sizes

Style 34



Compression tube adapter 316L stainless steel 1/4" to 1" sizes

Style 32

Hose barb & tube same size step-up & step-down sizes available; consult factory

Vacuum fitting, male 316L stainless steel

1/4" & 1/2" sizes

Style 35



Compression tube adapter w/nut & ferrule 316L stainless steel

1/4" - 1" Sizes available preswaged from factory

Style 32FN



NPT

Male NPT; 316 L stainless steel hex style

Style 03 - MNPT & hose barb same size



Male NPT jump sizes hex style; 316L stainless steel

Style 03U - Step-up

Style 03D - Step-down 2-1/2" & larger fittings have "wrench flats"

Style 04 - Male NPT, plain



Female NPT

Style 06 - Hex style; 316L stainless steel

Hose barb & female NPT same size

Style 05 - Female NPT, plain



Unions/Female JIC

Male union 316L stainless steel JIC x male NPT pipe adapter

Style 08 - Hose and MNPT barb same size

Style 08U - Step-up

Style 08D - Step-down



Female union 316L stainless steel

JIC x female pipe adapter

Style 07 - Same size FNPT pipe x hose barb

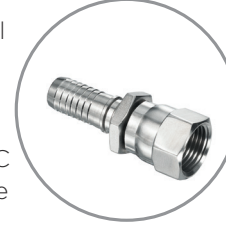
Style 07U - Step-up

Style 07D - Step-down



Female JIC swivel anti-torque style 316L stainless steel

Style 02HSN - JIC & hose barb same size



Butt Weld, 316L stainless steel "pipe size"

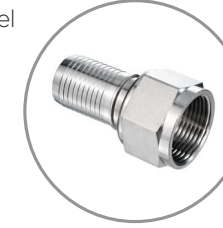
Style 01

Pipe size & hose barb same size, length & pipe schedule can be custom manufactured; consult factory



Female JIC swivel 316L stainless steel insert, 304 stainless steel swivel nut

Style 02 - JIC & hose barb same size



Versilon® Adapters

PFA encapsulated 316 male cam & groove x 150# Lap joint (swivel) flange adapter

Style 18T6 - 316L stainless steel flange

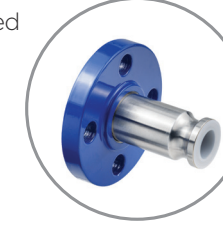
Style 18T4 - 304 stainless steel flange



PFA encapsulated 316 male cam & groove x 150# lap joint (swivel) flange adapter

Style 18TC - Epoxy coated carbon steel flange

Consult factory for 300# flange



PFA encapsulated 316 stainless steel "spool" adapter for connecting two fluoropolymer-lined female cam & groove fittings

Style 19T



Fluoropolymer Hose and Fitting Selection Guide



Premium quality tubing, hoses, and fittings fulfilling a range of demanding certification, performance and safety standards.

IMPORTANT: It is the user's responsibility to ensure the suitability and safety of Saint-Gobain materials for all intended uses. Laboratory, field or clinical tests must be conducted in accordance with applicable requirements in order to determine the safety and effectiveness for use of materials in any particular application. If intended for medical use, it is the user's responsibility to ensure that the materials to be used comply with all applicable medical regulatory requirements.

Limitation of Liability

Except for products for which Saint-Gobain (SGPPL) has established a specific written warranty, the products described herein are sold by SGPPL without any guarantee and/or warranty, oral or written. User assumes all risk, if any, including the risk of injury, loss or damage, whether direct, consequential or incidental, arising out of the use, misuse or inability to use these products.

Saint-Gobain Industrial & Consumer Solutions

210 Harmony Road
Mickleton, NJ 08056

www.ics.saint-gobain.com



Saint-Gobain
Life Sciences



SAINT-GOBAIN DISCLAIMS ALL IMPLIED WARRANTIES OF MERCHANTABILITY AND FITNESS FOR A PARTICULAR PURPOSE.

NOTE: Saint-Gobain Performance Plastics does not assume any responsibility or liability for any advice furnished by it, or for the performance or results of any installation or use of the product or of any final product into which the product may be incorporated by the purchaser and/or user.

Versilon® is a registered trademark of Saint-Gobain Performance Plastics.

SAINT-GOBAIN
INDUSTRIAL &
CONSUMER
SOLUTIONS



Making a material impact
around the world.

