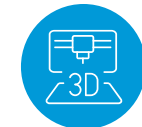


# TUBING SELECTION GUIDE

## Digital Printing



3D  
Printing



Wide Format  
Printing



Ink Jet  
Printing

Chemical Compatibility (For Reference Only)

TOP PERFORMERS	Product	Materials	Pump Tubing/ Transfer Tubing	Ink Types			Chemical Compatibility (For Reference Only)										Durometer, Shore A (ASTM D2240)	Color	Maximum Temperature for Continuous Use, °F (°C)	Flexibility	Relative Working Pressure Rating				
				Aqueous Ink	UV Cure Ink	Solvent Based Ink	Diluents*					Solvents													
				IBOA	HDDA	VCAP	VEEA	ACMO	VMOX	Benzene	Toluene	Xylene	Cyclohexane	Alcohols	Ketones	Mineral Oil						Acetate			
	<a href="#">Tygon® Ink 1000</a>	Polyolefin	Transfer Tubing	✓	✓		Fair	Excellent	Good	Excellent	Excellent	Excellent	Fair	Fair	Fair	Fair	Excellent	Good	Fair	Good	90	Black	131 (55)	Better	Best
	<a href="#">Tygon® 2375-D2</a>	Polyolefin	Transfer Tubing	✓	✓	✓	Poor	Good	Fair	Fair	Good	Fair	Poor	Poor	Poor	Poor	Excellent	Fair	Poor	Fair	75	Black	130 (54)	Best	Better
	<a href="#">Tygon® 2375</a>	Polyolefin	Transfer Tubing	✓		✓	Poor	Good	Fair	Fair	Good	Fair	Poor	Poor	Poor	Poor	Excellent	Fair	Poor	Fair	75	Clear	130 (54)	Best	Better
	<a href="#">Tygon® 2375-D5</a>	Polyolefin	Transfer Tubing	✓	✓	✓	Poor	Good	Fair	Fair	Good	Fair	Poor	Poor	Poor	Poor	Excellent	Fair	Poor	Fair	75	Blue	130 (54)	Best	Better
	<a href="#">Tygon® LP-1200</a>	Fluoropolymer Lined Polyurethane	Transfer Tubing	✓		✓	Excellent	Fair	Poor	Poor	Poor	Poor	Excellent	Excellent	Excellent	Excellent	Excellent	Excellent	Good	Excellent	78	Natural	180 (82)	Best	Better
	<a href="#">Versilon™ FEP</a>	Fluoropolymer	Transfer Tubing	✓	✓	✓	Excellent	Excellent	Excellent	Excellent	Excellent	Excellent	Excellent	Excellent	Excellent	Excellent	Excellent	Excellent	Excellent	Excellent	D60	Natural	402 (206)	Better	Best
	<a href="#">Versilon™ PFA</a>	Fluoropolymer	Transfer Tubing	✓	✓	✓	Excellent	Excellent	Excellent	Excellent	Excellent	Excellent	Excellent	Excellent	Excellent	Excellent	Excellent	Excellent	Excellent	Excellent	D60	Natural	402 (206)	Better	Best
	<a href="#">Tygon® A-60-G</a>	Thermoplastic Elastomer	Pump Tubing	✓			Poor	Good	Fair	Fair	Good	Fair	Poor	Poor	Fair	Fair	Excellent	Poor	Poor	Excellent	61	Black	275 (135)	Better	Good
	<a href="#">Tygon® XL-60</a>	Thermoplastic Elastomer	Pump Tubing	✓		✓	Poor	Good	Fair	Fair	Good	Fair	Poor	Poor	Fair	Fair	Fair	Poor	Fair	Excellent	60	Clear	250 (121)	Good	Good
	<a href="#">Versilon™ 2001</a>	Polyolefin	Pump Tubing	✓		✓	Poor	Fair	Fair	Good	Good	Fair	Poor	Poor	Fair	Fair	Excellent	Fair	Poor	Good	69	Clear	135 (57)	Better	Good
	<a href="#">Versilon™ TR-1000</a>	EPDM	Pump Tubing	✓			Poor	Excellent	Excellent	Excellent	Good	Excellent	Fair	Fair	Fair	Fair	Excellent	Excellent	Excellent	Good	54	Black	275 (135)	Good	Better



\* Based on the results of a 28-day soak at 40°C.

**Chemical Ratings:** Excellent (≤+/-2% wt.%)  
 Applies to diluents only. Good = (≤+/-5% wt.% + ≥+/-2%)  
 Fair (≤+/-20% wt.%)  
 Poor (≥+/-20%)

